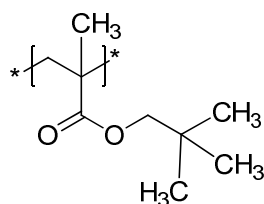


Sample Name: Poly(neopentyl methacrylate)

Sample #: P14797-NPMA

Structure:

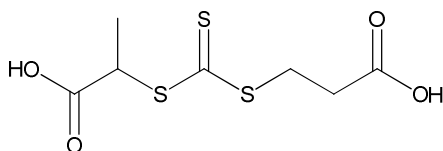


Composition:

$M_n \times 10^3$ (g/mol)	M_w/M_n
40.5	1.8
* - using dn/dc value for PMMA (0.085 mL/g)	

Synthesis procedure:

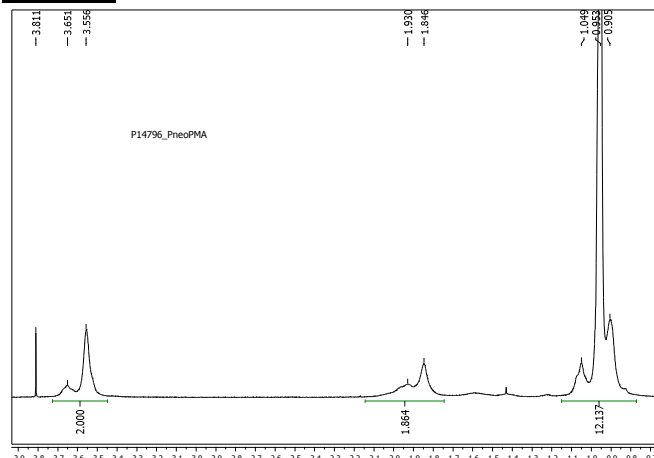
The product was obtained by RAFT polymerization using V501 as a radical initiator and the following chain transfer agent:



Characterization:

The product was characterized by size exclusion chromatography (SEC) using refractive index and light-scattering detectors (SEC-LS) to estimate M_n and polydispersity (M_w/M_n). The chemical structure was confirmed by ^1H NMR.

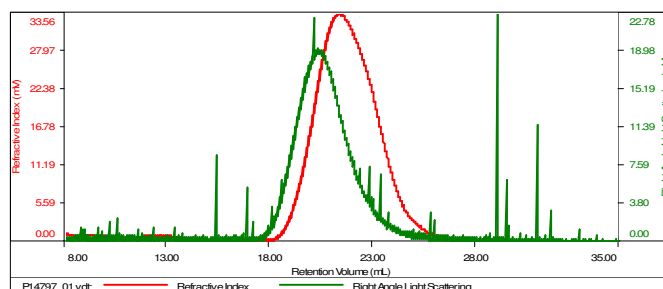
^1H NMR (500 Mhz, CDCl_3) spectrum of the polymer:



SEC elugram of the polymer:

Sample ID: P14797-NPMA

Concentration (mg/mL)	5.4660
Sample chdc (mL/g)	0.0840
Method File	PS80K-4August2016-0000.vcm
Column Set	3x PL 1113-6300
Solvent	THF



Sample	Mn (Da)	Mw (Da)	Mw/Mn	IV (dL/g)	Mp (Da)
P14797_01.vdt	40,602	72,916	1.796	0.1150	59,835