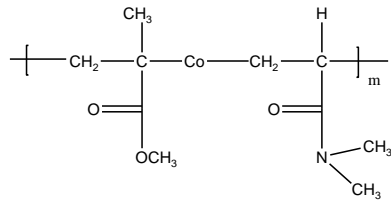


Sample Name:

Poly(Methylmethacrylate –co-N,N-dimethacrylamide)

Sample #: P9120C-MMADMAran

Structure:



Composition:

Mn x 10 ³ PMMA-co-DMA	PDI
175.0	1.7
MMA	40.0%

Synthesis Procedure:

BY GTP process

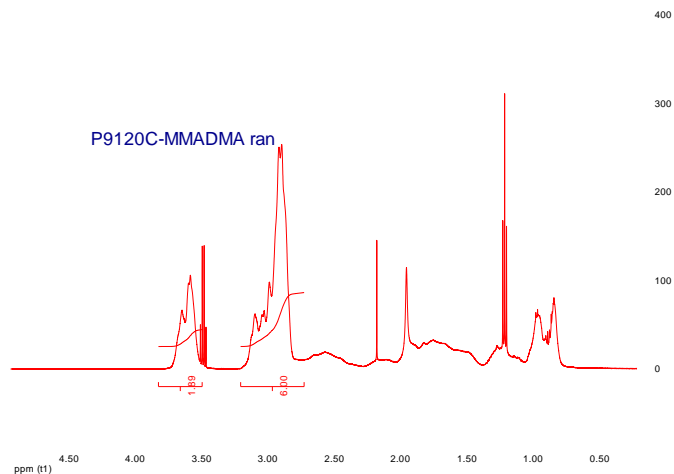
Characterization:

Polymer was analyzed by size exclusion chromatography (SEC) to obtain the molecular weight and polydispersity index (PDI)

Solubility:

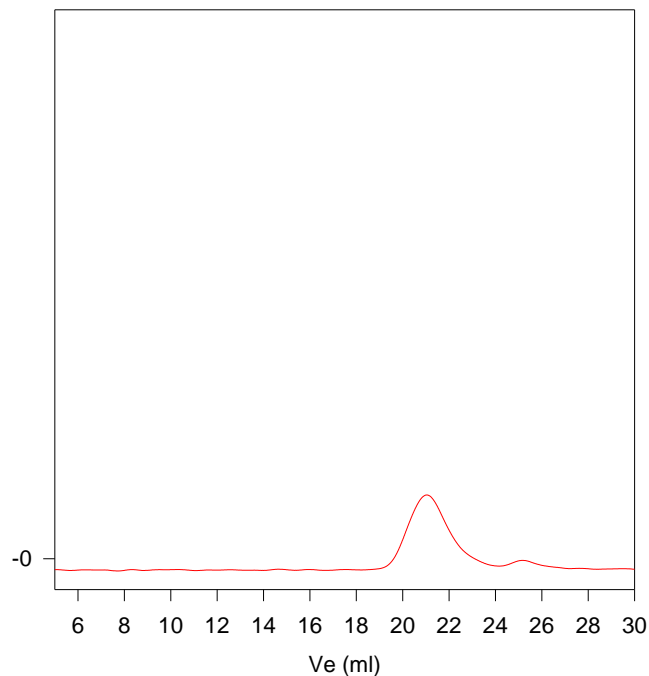
The polymer is soluble in THF and in Chloroform and precipitate out from hexane, ether.

¹H-NMR Spectrum of the block copolymer:



SEC of the Polymer:

P9120C-MMADMAran



Size exclusion chromatograph of poly(MMA-co-DMA):

M_w=175,000, M_n=298,000, M_w/M_n=1.7

Composition by HNMR: PMMA: 40 mole%