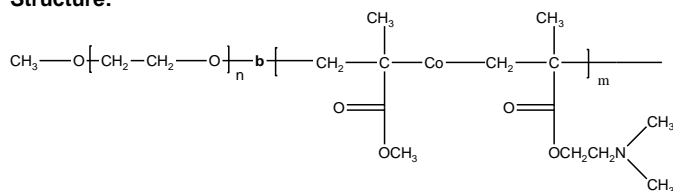


**Sample Name:**

**Poly(Methylmethacrylate –co-N,N-dimethacrylamide)**

**Sample #:** P9120A-MMADMAran

**Structure:**



**Composition:**

$M_n \times 10^3$ PMMA-co-DMA	PDI
6.5	1.4
MMA	45%

**Synthesis Procedure:**

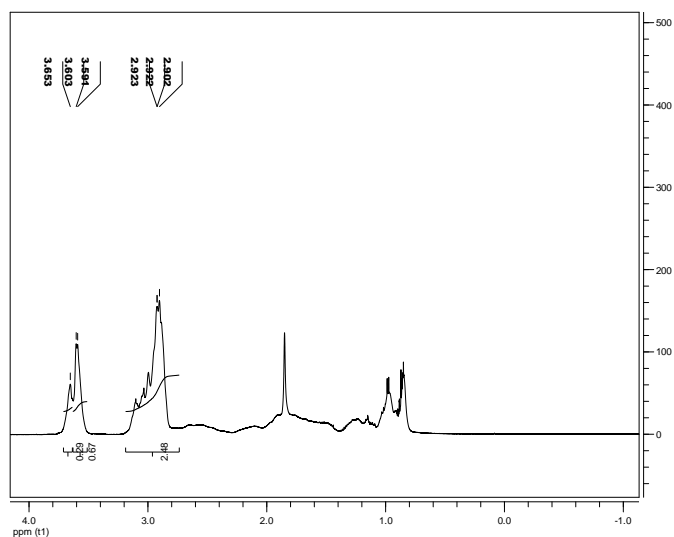
BY GTP process

**Characterization:**

Polymer was analyzed by size exclusion chromatography (SEC) to obtain the molecular weight and polydispersity index (PDI)

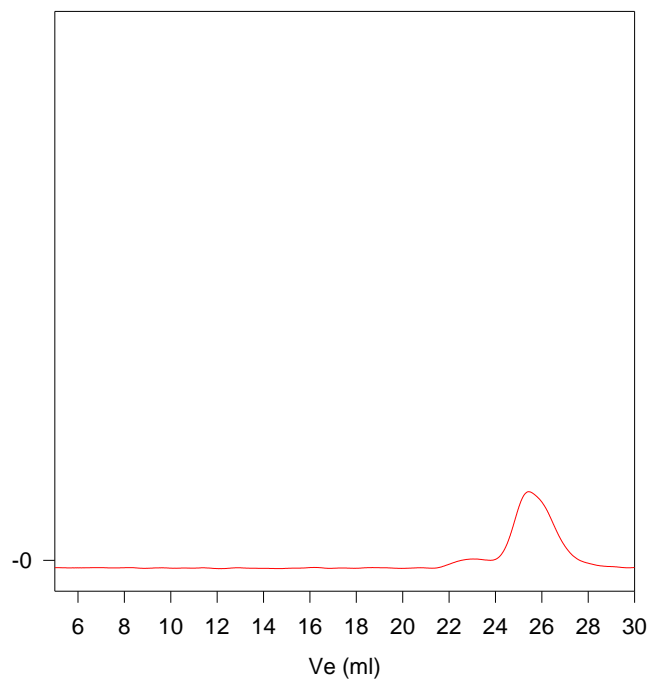
**Solubility:**

The polymer is soluble in THF and in Chloroform and precipitate out from hexane, ether.



SEC of the Polymer:

**P9120A-MMADMAran**



Size exclusion chromatograph of poly(MMA-co-DMA):

$M_w=6500$ ,  $M_n=9200$ ,  $M_w/M_n=1.4$

Composition by HNMR: PMMA: 45 mole%